

GEOstrip Systems™ Install Wizard

IMPORTANT

IF YOU HAVE PURCHASED GEOSTRIP SYSTEMS™ AND ARE LOADING THE SOFTWARE ON YOUR COMPUTER FOR THE FIRST TIME COMPLETE THE DOWNLOAD AND SETUP FOR GEOSTRIP SYSTEMS™ BEFORE INSERTING THE SECURITY DONGLE.

WHEN THE DONGLE IS INSERTED FOR THE FIRST TIME IT WILL LOOK FOR A DRIVER IN THE SOFTWARE. IF THE DONGLE WANTS TO SEARCH THE INTERNET FOR THE DRIVER SELECT YES AND IT WILL LOCATE THE DRIVER IN THE GEOSTRIP SYSTEMS™ SOFTWARE.

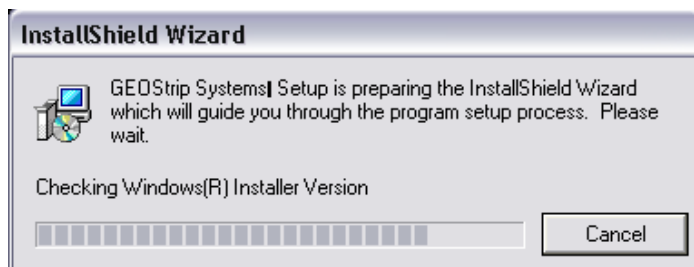
1. Download GEOstrip Systems™ Striplog Install Wizard from www.grsi.ca or from the CD provided and save to your desktop.

GEOstrip Systems™ Striplog will run on:

- Windows XP
- XP Pro
- Win 2000
- Win 2000 Pro and
- Vista operating systems. (Home, Home Premier, Business)
- Windows Server 2003

2. When you see the GEOstrip Setup Launcher on your desktop double click on it to launch.

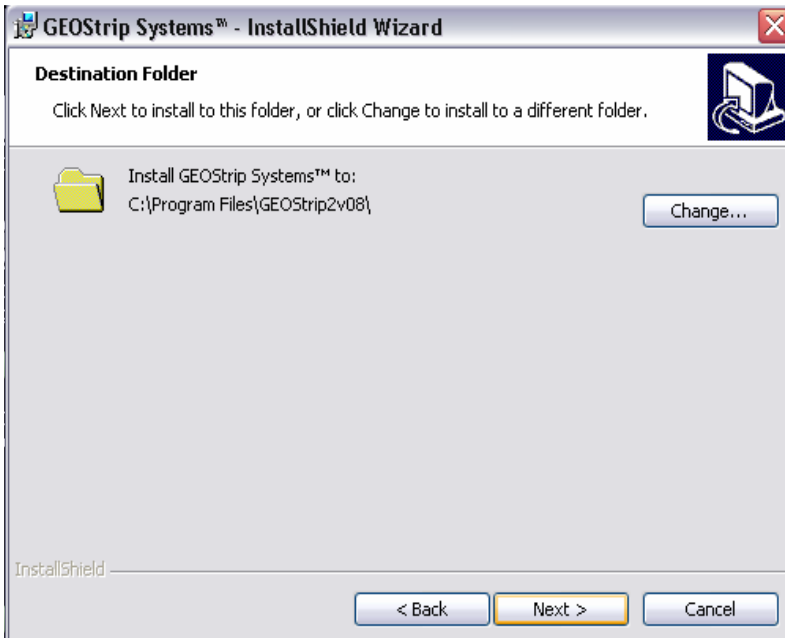
3. Install Shield Wizard will check your computer settings before setup.



4. The Welcome to GEOstrip Install Shield Wizard will come up, click on Next.



5. Next the Destination Folder will come up where you want to save GEOstrip too. Click Next.

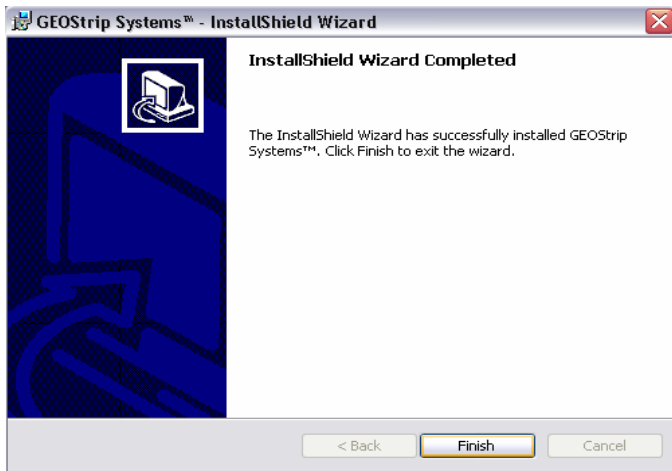


6. The Customer Information identification box will come up. Please fill in and click on Next.



7. The Ready to Install Program dialogue box will appear to confirm destination of GEOstrip, User name and Company. Click Next.

8. Then you should see the Install Shield Wizard Complete message come up. Click Finish.



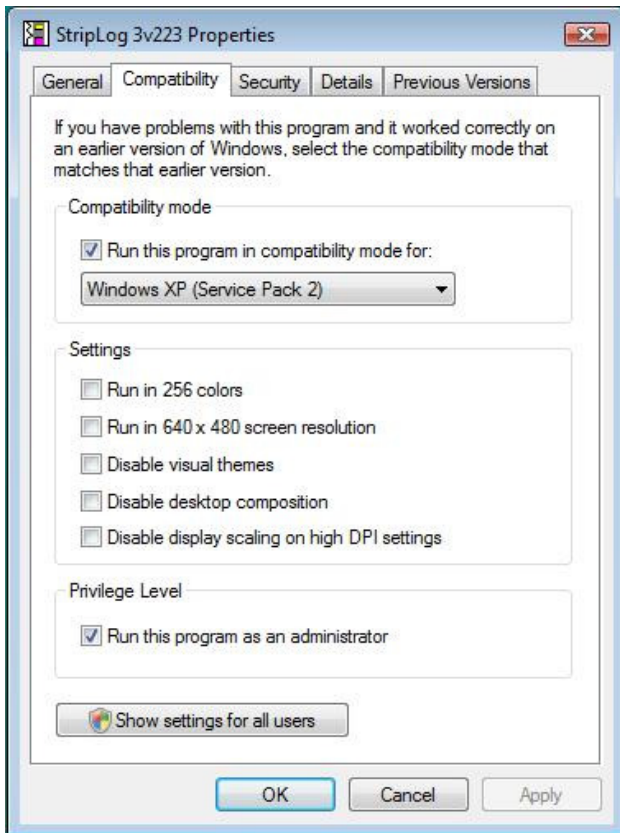
9. Now you should see the GEOstrip Systems™ Striplog Icon on your desktop. If so, your program has loaded successfully. Double click the icon to launch the GEOstrip VC Striplog™ program.



NOTE: When GEOstrip Systems is run on Windows Vista Business the software is forced to Read-Only status after installation. To change this back to edit & save abilities:

1. Navigate to GEOstrip System's Executable in C: Program Files/GEOstrip 3.23
2. Right click on the GEOstrip Program and select Properties.
3. Select the Compatibility Folder.
4. Click on Run this program in compatibility mode for Windows XP Service Pack 2.
5. Then click on Run as Administrator.
6. Click on Apply and you will now be able to edit and save Logs.

This will have to be done each time you upgrade to a newer version of GEOstrip Systems.



How to Install the GEOstrip USB Dongle

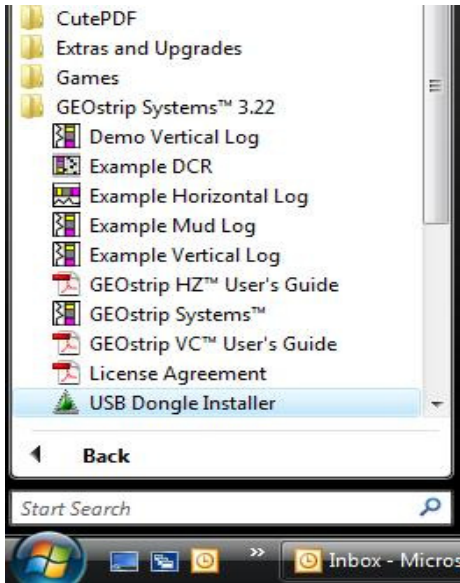
If you have a GEOstrip USB Dongle and are installing it for the first time please follow the following steps:

1. Install GEOstrip Systems™ software first before inserting your dongle into the computer's USB Port.
2. Insert the USB Dongle into a USB port on your computer.
3. Found New Hardware Wizard should detect the new device and ask to load a driver or support software for the dongle to work properly. Select Yes.

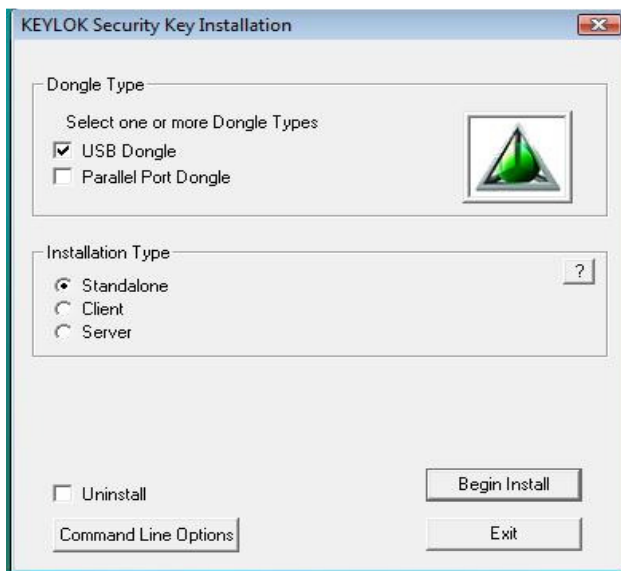


4. If the Found New Hardware Wizard request permission to access the Internet to search for a Driver for the Dongle select yes. It will not access the internet and will locate the driver on the computers hard drive.
5. The New Hardware Found Wizard should find the driver and display a message stating the device is loaded and ready for use. If you do not have a successful driver load then you can go to the next step to locate the driver.

6. On your computer's Desktop screen select Start then Programs then GEOstrip 3.23 The folder should open below displaying the contents of the GEOstrip folder. At the bottom of the list please select the USD Dongle Installer.



7. Click on USB Dongle and click on Begin Install.



The computer will find the required files and launch the Found New Hardware Wizard again. Go thru the steps as above and the dongle driver will load and the Dongle will be recognized as a Protection Device ready for use.